

# ANNALEN

DES NATURHISTORISCHEN MUSEUMS IN WIEN



**nhm**  
naturhistorisches  
museum wien

Serie B

122

## Inhalt

VITEK E. & LACK H.W.: <i>Wilhelmina Rechinger 1925–2019</i> .....	5–10
LÖDL M.: <i>Hofrat Univ.-Doz. Mag. Dr. Maximilian Fischer (1929–2019)</i> .....	11–15
ROSA P., MADL M., ZETTEL H. & ZIMMERMANN D.: <i>An illustrated and annotated catalogue of the Chrysididae (Insecta: Hymenoptera) types deposited at the Natural History Museum Vienna</i> .....	17–140
WITTMANN K.J.: <i>Heteromysis (Heteromysis) abednavandii</i> sp.n.: a new species from coral reef aquaria in the Aqua Terra Zoo, Vienna, Austria (Mysida, Mysidae) .....	141–158
DWORSCHAK P.C.: <i>A new species of Paraxiopsis DE MAN, 1905 (Decapoda: Axiidea: Axiidae) from Safaga (Red Sea) with notes on its burrows</i> .....	159–167
EBMER D., WIEDERMANN S. & SATTMANN H.: <i>Morphological identifications of gastrointestinal nematodes and acanthocephalans of raptors and owls from Austria</i> .....	169–174
REIER S., SATTMANN H. & HARING E.: <i>Optimizing conflicting tasks in the analysis of parasitic worms: morphological imaging, DNA yield, specimen and DNA preservation</i> .....	175–182
ESCHNER A., VINARSKI M.V. & SCHNEDL S.-M.: <i>Addendum to the examination of the type material of freshwater mollusk species described by J.P.R. Draparnaud</i> .....	183–191
ERNST K., GEMEL R., GASSNER G. & SCHWEIGER S.: <i>Ergänzungen und Berichtigungen zum Typenkatalog der Herpetologischen Sammlung des Naturhistorischen Museums Wien (GEMEL et al. 2019)</i> .....	193–204
WALLNÖFER B.: <i>A revision of neotropical Diospyros (Ebenaceae): part 13</i> .....	205–243
VITEK E.: <i>Asarina procumbens</i> (Antirrhinaceae), locally naturalised in Austria ....	245–248
NEGARESH K.: <i>The lectotypification of Centaurea kotschyi</i> subsp. <i>persica</i> (Asteraceae, Cardueae–Centaureinae) .....	249–253
New Taxa .....	255

# ANNALS of CARNEGIE MUSEUM

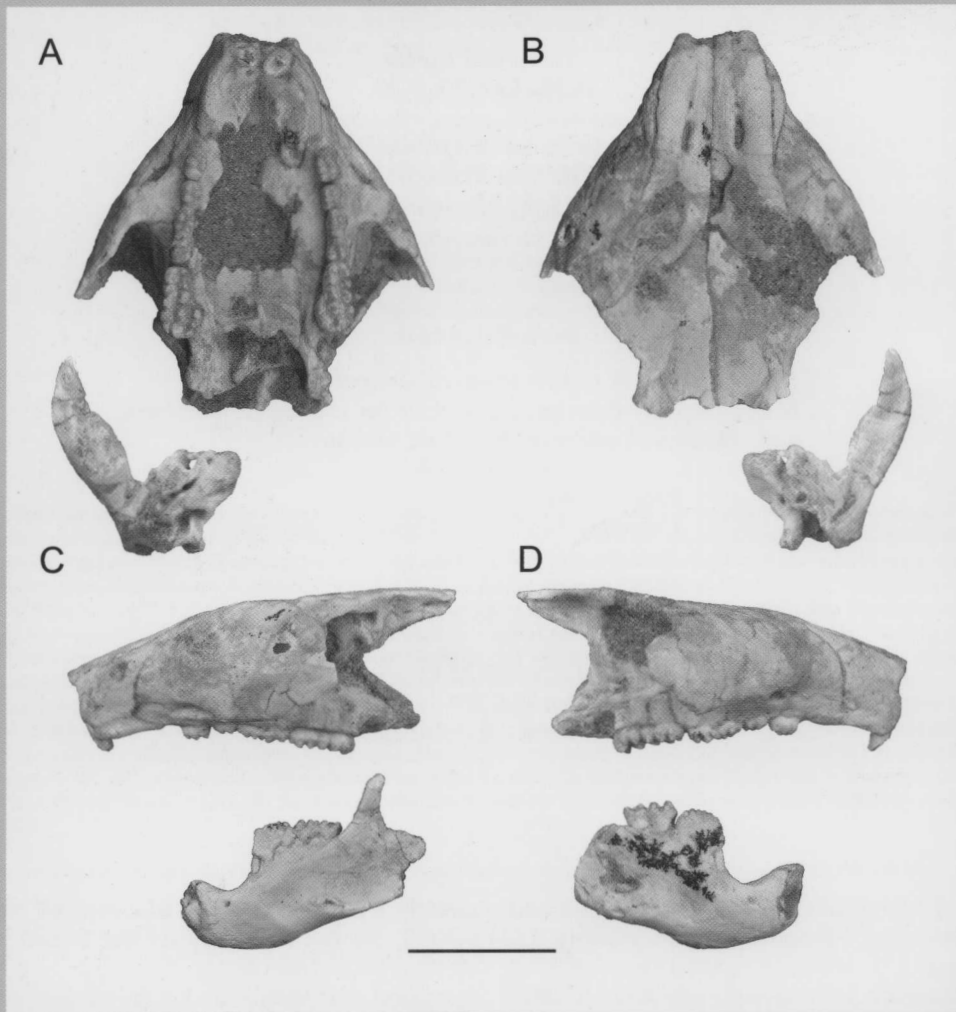
ISSN 0097-4463

THE CARNEGIE MUSEUM OF NATURAL HISTORY  
4400 FORBES AVENUE • PITTSBURGH, PENNSYLVANIA 15213

VOLUME 85

31 December 2019

NUMBER 4



*Guibaatar castellanus*, a new genus and species, by Wible, Shelley, and Bi. A, B, rostrum and partial right braincase and zygoma in ventral and dorsal views, respectively; C, rostrum left side and left dentary in lateral view; D, rostrum right side and right dentary in lateral view. Scale = 10 mm.

CONTENTS

---

New genus and species of djadochtatheriid multituberculate (Allotheria, Mammalia) from the Upper Cretaceous Bayan Mandahu Formation of Inner Mongolia .....	<b>John R. Wible, Sarah L. Shelley, Shundong Bi</b>	<b>279</b>
Paleontology and geology of the Badwater Creek area, central Wyoming. Part 21. <i>Natrona</i> , a new genus of rodent, family Sciuravidae (Mammalia) .....	<b>Mary R. Dawson</b>	<b>329</b>
Determining the largest known land animal: a critical comparison of differing methods for restoring the volume and mass of extinct animals .....	<b>Gregory Paul</b>	<b>335</b>
Index to Volume 85 .....		<b>359</b>
Erratum 1 .....		<b>360</b>



CONTENTS

---

- A new plesiosaur (Reptilia: Sauropterygia) specimen from the Upper Cretaceous of west Antarctica, with comments on the ontogeny and morphological diversity of the elasmosaurid pelvic girdle ..... **Case V. Miller, Steven W. Salisbury, Rodolfo A. Coria, Eric M. Roberts, Patrick M. O'Connor, Marcelo A. Reguero, and Matthew C. Lamanna** 93
- New gophers (Rodentia: Geomyidae) from the Cabbage Patch beds of Montana (Renova Formation) and the phylogenetic relationships within Entoptychinae ..... **Jonathan J.M. Calede and Donald L. Rasmussen** 107
- Fleas (Siphonaptera: Pygiopsyllomorpha) of Papua New Guinea and Papua Province (Indonesia). Part V. *Astivalius*, *Idiochaetis*, *Muesebeckella*, and *Obtusifrontia* (Stivaliidae: Stivaliinae), with description of six new species ..... **Michael W. Hastriter** 169
- A new sciuravid rodent (Mammalia) from the early Eocene (Bridgerian) and the sciuravid-eomyid transition ..... **William W. Korth** 197

## Contents

### ORIGINAL PAPERS

- 52 **Cheek, Martin, Luke, Quentin, Matimele, Hermenegildo, Banze, Aurélio & Lawrence, Poppy.** *Cola* species of the limestone forests of Africa, with a new, endangered species, *Cola cheringoma* (Sterculiaceae), from Cheringoma, Mozambique
- 53 **Cheek, Martin, Onana, Jean-Michel, Yasuda, Shigeo, Lawrence, Poppy, Ameka, Gabriel & Buinovskaja, Greta.** Addressing the *Vepris verdoorniana* complex (Rutaceae) in West Africa, with two new species
- 54 **Sothers, C. A. & Prance, G. T.** A new name in *Moquilea* (Chrysobalanaceae)
- 55 **Wilmot-Dea, C. M., Hopkins, H. C. F. & Leeratiwong, C.** Notes on *Mucuna* (Leguminosae: Papilionoideae) in Thailand: fruits of *M. oligoplax* re-assessed, and a revised key to species with lamellate fruits
- 56 **Ganesan, S. K.** Flora of Singapore precursors. 15. Nomenclatural novelties in Anacardiaceae
- 57 **Joshi, Yogesh.** *Opegrapha physciae* (Arthoniales: Opegraphaceae), a new lichenicolous species from The Philippines
- 58 **Santos, Matheus F., Sano, Paulo T. & Lucas, Eve.** Taxonomic updates in South American *Myrcia* (Myrtaceae: Myrteae): lectotypes, synonyms, new combinations and new names in *Myrcia* sect. *Eugeniopsis*
- 59 **Pacifico, Ricardo, Candido, Leticia F. & Fidanza, Karina.** *Microlicia donii* (Melastomataceae: Microlicieae), an endangered new species from Serra do Cabral, Minas Gerais, Brazil
- 60 **Schneider, Layla Jamylle Costa, de Sá Nunes, Clebiana, Viana, Pedro Lage & dos Santos Bragança Gil, André.** *Rhynchospora unguinux* (Cyperaceae), a new species of *Rhynchospora* sect. *Pauciflorae* from the Serra dos Carajás, Pará, Brazil
- 61 **São-Mateus, Wallace M. B., Simon, Marcelo Fragomeni, de Queiroz, Luciano Paganucci, Jardim, Jomar Gomes & Cardoso, Domingos B. O. S.** Two new species of *Harpalyce* (Leguminosae, Papilionoideae) from the Cerrado hotspot of biodiversity in Brazil
- 62 **de Paula Alves Bezerra, Luísa Maria, de Vargas, Wanderleia, Cândido, Elisa Silva, Cobra e Monteiro, Thiago, Vatanparast, Mohammad & Fortuna Perez, Ana Paula.** *Rhynchosia mineira* (Leguminosae: Papilionoideae), a new and critically endangered species from Minas Gerais, Brazil
- 63 **Silva-Filho, Alexandre G. S., Meiras-Otoni, Angelina & Wartchow, Felipe.** *Hygrocybe aurantiomagnifica*: a new species of section *Firmae* (Hygrophoraceae, Basidiomycota) from Brazil
- 64 **Wood, John R. I.** *Stenostephanus* (Acanthaceae) in Peru
- 65 **Wood, John R. I.** A synopsis of *Stenostephanus* Nees (Acanthaceae) in Bolivia
- 66 **Dirmenci, Tuncay & Robson, Norman K. B.** Two new taxa of *Hypericum* (Hypericaceae) from Turkey
- 67 **Beentje, Henk.** Three new species and some nomenclatural changes in *Senecio* (Compositae/Asteraceae: Senecioneae) in the *Flora Zambesiaca* area
- 68 **Mustaqim, Wendy A., Utteridge, Timothy M. A. & Heatubun, Charlie D.** *Diplycosia papuana* (Ericaceae: Vaccinioideae: Gaultherieae): a new endemic species from central New Guinea
- 69 **Shahimi, Salwa, Conejero, Maria, Prychid, Christina J., Rudall, Paula J., Hawkins, Julie A. & Baker, William J.** A taxonomic revision of the myrmecophilous species of the rattan genus *Korthalsia* (Arecaceae)
- 70 **Landrein, Sven & Farjon, Aljos.** A monograph of Caprifoliaceae: Linnaeeae
- 71 **Liang, Yuxi, Phillips, Sylvia M., Cheek, Martin & Larridon, Isabel.** A revision of the African genus *Mesanthemum* (Eriocaulaceae)

The views expressed in Kew Bulletin do not necessarily reflect those of the Royal Botanic Gardens, Kew.



# adansonia 2019 • 41 • 1-15

Texte intégral disponible sur internet/Full text available on internet [www.adansonia.com](http://www.adansonia.com)

Bouchart-Dufay I., Jouy A. & Rakotondrainibe F.

- 1 ● Révision du genre *Marsilea* L. (Marsileaceae) à Madagascar  
article 41 (1) publié en ligne le/published online on 22/01/2019

Timaná M. E., Lebouvier M. & Rouhan G.

- 17 ● *Sagina hookeri* Timaná, sp. nov. (Caryophyllaceae), a new endemic species for the flora of Île Amsterdam (French Southern and Antarctic Lands)  
article 41 (2) publié en ligne le/published online on 11/02/2019

Del Rio C. & De Franceschi D.

- 25 ● An abnormally twinned fossil fruit of *Iodes* Blume (Icacinaceae) from Rivecourt (Thanetian, Oise, France)  
article 41 (3) publié en ligne le/published online on 11/03/2019

Ntore S. & Lachenaud O.

- 29 ● Two new species and a new combination in the genus *Pauridiantha* Hook.f. (Rubiaceae) from tropical Africa  
article 41 (4) publié en ligne le/published online on 8/04/2019

Onana J. M., Cheek M. & Chevillotte H.

- 41 ● Additions au genre *Vepris* Comm. ex A.Juss. (Rutaceae-Toddalieceae) au Cameroun  
article 41 (5) publié en ligne le/published online on 6/05/2019

Sarma J., Barbhuiya H. A. & Dey S.

- 53 ● A new rheophytic species of *Syzygium* Gaertn. (Myrtaceae) from Assam, North East India  
article 41 (6) publié en ligne le/published online on 20/05/2019

Scherberich D. & Duruisseau† J.

- 59 ● Three new species of *Begonia* sect. *Erminea* (Begoniaceae) from north-east Madagascar  
article 41 (7) publié en ligne le/published online on 3/06/2019

Jongkind C. C. H.

- 69 ● *Didelotia gracillima* Jongkind, sp. nov. (Leguminosae, Detarioideae), a new forest tree from Liberia and Ivory Coast  
article 41 (8) publié en ligne le/published online on 17/06/2019

Kovtonyuk N. & Durand-Andro V.

- 75 ● Typification of *Primula* L. taxa names (Primulaceae), described by A. Franchet in 1886 from China and Eastern Tibet  
article 41 (9) publié en ligne le/published online on 1/07/2019

Wahlert G. A., Phillipson P. B. & Callmander M. W.

- 91 ● *Astrotrichilia leroyana*, sp. nov. (Meliaceae, Melioideae): a new species from northeastern Madagascar  
article 41 (10) publié en ligne le/published online on 29/07/2019

Al-Shehbaz I. A.

- 97 ● Discovery of the type collection of *Arabis nuda* Bél. (Brassicaceae)  
article 41 (11) publié en ligne le/published online on 27/08/2019

Gardère M. L., Duarte M. C., Moraes P. L. R., Muller S. & Romeiras M. M.

- 101 ● L'expédition scientifique de João da Silva Feijó aux îles du Cap Vert (1783-1796) et les tribulations de son herbier  
*The scientific expedition of João da Silva Feijó to the Cabo Verde Islands (1783-1796) and the tribulations of his herbarium*  
article 41 (12) publié en ligne le/published online on 25/09/2019

Ghahremaninejad F., Rostami Ghadi Z., Assadi M. & Falatoury A. N.

- 177 ● A new species of *Bufo* L. (Caryophyllaceae) from the Kordestan province (Iran)  
article 41 (13) publié en ligne le/published online on 21/10/2019

McKenzie R. J. & Nepi C.

- 183 ● Taxonomic reassessment and typification of species names in *Arctotis* L. (Asteraceae)  
proposed by Jean Louis Marie Poiret  
article 41 (14) publié en ligne le/published online on 21/11/2019

Blanco M. A. & Jiménez J. E.

- 193 ● Duckweeds (Araceae: Lemnoideae) growing on wet, vertical rocks behind a waterfall in Costa Rica, with a new country record of *Wolffiella oblonga* (Phil.) Hegelm.  
article 41 (15) publié en ligne le/published online on 16/12/2019

Publication en flux continu, articles 1-15 (janv.-déc. 2019)  
Fast track, articles 1-15 (Jan.-Dec. 2019)  
ISSN (imprimé / print): 1280-8571  
ISSN (électronique / electronic): 1639-4798

Diffusion – Publications scientifiques  
Muséum national d'Histoire naturelle  
CP 41 – 57 rue Cuvier  
F-75231 Paris cedex 05 (France)  
Tél.: 33 (0)1 40 79 48 05  
Fax: 33 (0)1 40 79 38 40  
diff.pub@mnhn.fr  
<http://sciencepress.mnhn.fr>



**MUSÉUM**  
NATIONAL D'HISTOIRE NATURELLE  
**PUBLICATIONS  
SCIENTIFIQUES**

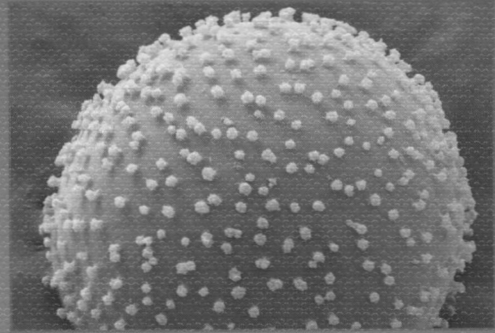
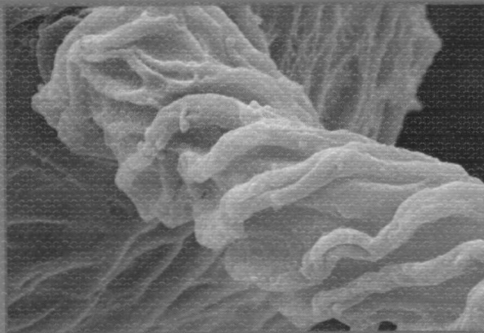
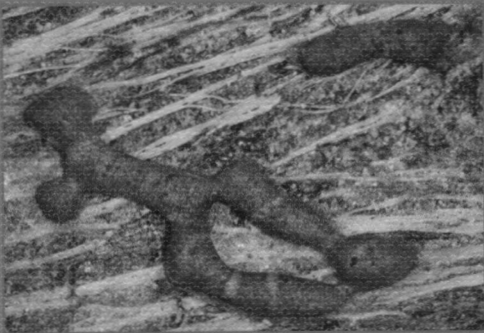


# Berichte

der

## Bayerischen Botanischen Gesellschaft

Band 89



München  
2019



BRACKEL, W. v.: Weitere Funde von flechtenbewohnenden Pilzen in Bayern – Beitrag zu einer Checkliste VI . . . . .	105–126
FUCHS, T. & EWALD, J.: Vegetation und Schutz der Leitenwälder in der Umgebung von Freising (Oberbayern) . . . . .	43–57
FÜTTERER, S., & EWALD, J.: Die Biotopausstattung der Brunnen- kopfmalm im Ammergebirge zu Beginn der Wiederbeweidung	83–104
KUHNT, A.: Bemerkenswerte Myxomycetenfunde: Neue Arten, Neukombinationen und Nachweise seltener Arten – Teil 2 . .	139–221
MÜLLER, N., WOELLNER, R., WAGNER, TH. C., REICH, M., BEHRENDT, S., BURKEL, L., NEUKIRCHEN M. & KOLLMANN, J.: Hoffnung für die Populationsentwicklung von Wildflussarten der Alpen? Rückgang und aktuelle Bestandssituation von Zwergrohrkol- ben ( <i>Typha minima</i> ), Deutscher Tamariske ( <i>Myricaria germa- nica</i> ) und Uferreitgras ( <i>Calamagrostis pseudophragmites</i> ) in Bayern . . . . .	5–22
REICHARDT, E.: Die Diatomeen im Gebiet der Stadt Treuchtlingen – I. Nachtrag . . . . .	127–138
RUFF, M., DIEWALD, W., WEISS, M. & TRIEBEL, D.: Floristischer Status und Florenwandel über 60 Jahre – Eine erste Analyse des Datenbestandes zum Projekt „Flora von Bayern“ . . . . .	223–244
STILLE, J. S., VITTOZ, P., DICKORÉ, W. B., HAFFER D. & WISSEMANN, V.: Experimentelle Untersuchungen zur Beeinflussung des Wachstums des Alpenedelweiß ( <i>Leontopodium alpinum</i> ) durch den pH-Wert des Bodens und durch Konkurrenz . . . . .	59–82
VOIGT, A. & EWALD, J.: Die wärmeliebenden Waldgesellschaften der Lechleiten zwischen Augsburg und Schongau – Vegetation und Schutz . . . . .	23–42
<b>Botanische Kurzberichte</b> . . . . .	245–306
<b>Nachrufe</b> . . . . .	307–340
<b>Rezensionen</b> . . . . .	341–352

# FOLIA GEOBOTANICA

A Journal of Plant Ecology and Systematics



54/1-2 2019

INSTITUTE OF BOTANY  
CZECH ACADEMY OF SCIENCES

 Springer

# Contents

**Special Issue: The Ecology of Seeds**

**Guest Editors: Borja Jimenez-Alfaro, Alessandra Fidelis, Lucy Commander**

**JIMÉNEZ-ALFARO B., FIDELIS A., COMMANDER L. 1**

Seed germination niche across habitats: an introduction to this special issue

**BANDARA R.G., FINCH J., WALCK J.L., HIDAYATI S.N., HAVENS K. 5**

Germination niche breadth and potential response to climate change differ among three North American perennials

**GOMES S.E.V., DE OLIVEIRA G.M., ARAUJO M.D.N., SEAL C.E., DANTAS B.F. 19**

Influence of current and future climate on the seed germination of *Cenostigma microphyllum* (Mart. ex G. Don) E. Gagnon & G. P. Lewis

**COCHRANE A. 29**

Effects of temperature on germination in eight Western Australian herbaceous species

**BORGHETTI F., DE ANDRADE L.A.Z., SCHMIDT I.B., BARBOSA E.R.M. 43**

Seed germination and seedling recruitment of *Dimorphandra mollis* Benth. in a Neotropical savanna subjected to prescribed fires

**LÓPEZ-MÁRSICO L., FARIÁS-MOREIRA L., LEZAMA F., ALTESOR A., RODRÍGUEZ C. 53**

Light intensity triggers different germination responses to fire-related cues in temperate grassland species

**ZIRONDI H.L., DE PINHO JOSÉ H., DAIBES L.F., FIDELIS A. 65**

Heat and smoke affect the germination of flammable resprouters: *Vellozia* species in the Cerrado

**VANDELOOK F., VAN DE VYVER A., CARTA A. 73**

Three phylogenetically distant shade-tolerant temperate forest herbs have similar seed germination syndromes

**KAZANCI D.D., TAVŞANOĞLU Ç. 85**

Heat shock-stimulated germination in Mediterranean Basin plants in relation to growth form, dormancy type and distributional range

**EMERY N.J., OFFORD C.A. 99**

Environmental factors influencing fruit production and seed biology of the critically endangered *Persoonia pauciflora* (Proteaceae)

**LOMBARDI T., BEDINI S., BERTACCHI A. 115**

Germination ecology of the aromatic halophyte *Artemisia caerulescens* L.: influence of abiotic factors and seed after-ripening time

**RASRAN L., EISENMANN C., WAGENTRISTL R., BERNHARDT K.-G. 125**

Germination requirements of the subordinate fen meadow species *Valeriana dioica* L.

**DI CECCO V., DI MUSCIANO M., FRATTAROLI A.R., DI MARTINO L. 139**

Seed ecology of *Saxifraga italica*: effects of light, temperature and gibberellic acid

**COMPANY T., SORIANO P., ESTRELLES E., MAYORAL O. 151**

Seed bank longevity and germination ecology of invasive and native grass species from Mediterranean wetlands



# Contents

**GANAMÉ M., BAYEN P., OUÉDRAOGO I., DIMOBE K. & THIOMBIANO A. 163**

Woody species composition, diversity and vegetation structure of two protected areas along a climatic gradient in Burkina Faso (West Africa)

**RUIZ-SANCHEZ E., SOSA V., ORTIZ-RODRIGUEZ A.E. & DAVIDSE G. 177**

Historical biogeography of the herbaceous bamboo tribe Olyreae (Bambusoideae: Poaceae)

**MIRANDA J., FINLEY J. & AARSSSEN L. 191**

Leafing intensity predicts fecundity allocation in herbaceous angiosperms

**MAIA V.A., DE SOUZA C.R. & DOS SANTOS R.M. 199**

Species tolerance degree to soil conditions shaping plant communities

**BOHNER A., KARRER J., WALCHER R., BRANDL D., MICHEL K.,  
ARNBERGER A., FRANK T. & ZALLER J.G. 211**

Ecological responses of semi-natural grasslands to abandonment: case studies in three mountain regions in the Eastern Alps

**LISNER A., KAINA G., SISOL M., FIBICH P., NOVOTNÝ V.,  
WEIBLEN G.D. & LEPSÍ J. 227**

Determinants of *Piper* (Piperaceae) climber composition in a lowland tropical rainforest in New Guinea

**ROCHA E.A., DOMINGOS-MELO A., ZAPPI D.C. & MACHADO I.C. 239**

Reproductive biology of columnar cacti: are bats the only protagonists in the pollination of *Pilosocereus*, a typical chiropterophilous genus?

**ZHU Z.-X., WANG J.-H., SAKAGUCHI S., ZHAO K.-K., MOORE M.J. &  
WANG H.-F. 257**

Complete plastome sequences of two *Neottia* species and comparative analysis with other Neottieae species (Orchidaceae)

**ZHANG J., WANG M., GUO Z., GUAN Y., GUO Y. & YAN X. 267**

Variation in ploidy level and genome size of *Cynodon dactylon* (L.) Pers. along a latitudinal gradient

**KOÇ M., HAMZAOĞLU E. & AKSOY A. 279**

A new species and five new combinations of *Sabulina* (Caryophyllaceae) from Turkey

**OSPINA J.C. & PICCA P.I. 291**

*Festuca giraldoi* (Loliinae, Poaceae), a new species from Argentina, with a revision of the taxonomic concept and identity of *Festuca lilloi*

**TROVÓ M., ECHTERNACHT L., SANO P.T. & DA COSTA F.N. 307**

Revisiting *Paepalanthus* subsect. *Polycladus* (Eriocaulaceae): re-circumscription, nomenclatural notes and description of a noteworthy new species

Volume 153, number 3 (2020)

# PLANT ECOLOGY and EVOLUTION

## Contents

### REGULAR PAPERS

- 337 M.E. Suárez-Mota & J.L. Villaseñor – Ecological niche overlap among species of the genus *Zaluzania* (Asteraceae) from the dry regions of Mexico
- 348 J. Bobo-Pinilla, N. López-González & J. Peñas – Conservation of genetic diversity in Mediterranean endemic species: *Arenaria balearica* (Caryophyllaceae)
- 361 X. Wang, M. Wen, M. Wu & D. Zhang – *Cordia subcordata* (Boraginaceae), a distylous species on oceanic coral islands, is self-compatible and pollinated by a passerine bird
- 373 F. Bordbar & P. Meerts – Patterns in the alien flora of the Democratic Republic of the Congo: a comparison of Asteraceae and Fabaceae
- 390 I.F. Treviño-Zevallos & C. Lado – Myxomycete diversity in a humid montane forest on the eastern slopes of the Peruvian Andes
- 399 E. Ortúñez, R. Gamarra, S. Gestal, Á. Hernando & P. Galán Cela – Revision of *Eulophia* (Orchidaceae) in Nigeria, Cameroon, Equatorial Guinea, Gabon, and the Republic of the Congo
- 427 I. Darbyshire, D.J. Goyder, J.R.I. Wood, A. Banze & J.E. Burrows – Further new species and records from the coastal dry forests and woodlands of the Rovuma Centre of Endemism
- 446 L. Pereira-Silva, R. Trevisan, A.C. Rodrigues & I. Larridon – Combining the small South American genus *Androtrichum* into *Cyperus* (Cyperaceae)
- 455 A. Hounkpèvi, V.K. Salako, J.C.F. Donhouédé, E.H. Daï, F. Tovissodé, R. Glèlè Kakaï & A.E. Assogbadjo – Natural intraspecific trait variation patterns of the wild soursop *Annona senegalensis* (Annonaceae) along a climatic gradient in Benin, West Africa
- 466 A. Vrijdaghs, E. Smets & P. De Block – Different ways to obtain similar results: the development of the corolla and epipetaly in Rubieae (Rubiaceae)

continued inside



**Meise**  
**Botanic Garden**



Royal  
**Botanical**  
**Society of**  
**Belgium**

ISSN 2032-3913 (print)

available online :  
[www.plecevo.eu](http://www.plecevo.eu)

Volume 153, number 2 (2020)

# PLANT ECOLOGY and EVOLUTION

## Contents

### EDITORIAL

- 185 B. Verstraete – A new decade and a new editor in chief for *Plant Ecology and Evolution*

### REGULAR PAPERS

- 188 P. De Frenne, R. Gruwez, P.W.F.M. Hommel, A. De Schrijver, R.P.J. Huiskes, R.W. de Waal, P. Vangansbeke & K. Verheyen – Effects of heathland management on seedling recruitment of common juniper (*Juniperus communis*)
- 199 L.L. Beaton – A latitudinal gradient in herbivore resistance in common sunflower, *Helianthus annuus* (Asteraceae)
- 208 J.A. Nunes, P.M. Villa, A.V. Neri, W.A. Silva & C.E.G.R. Schaefer – Seasonality drives herbaceous community beta diversity in lithologically different rocky outcrops in Brazil
- 219 A. Baumel, F. Médail, M. Juin, T. Paquier, M. Clares, P. Laffargue, H. Lutard, L. Dixon & M. Pires – Population genetic structure and management perspectives for *Armeria belgenciensis*, a narrow endemic plant from Provence (France)
- 229 V. Motato-Vásquez, A.M. Gugliotta, M. Rajchenberg, M. Catania, C. Urcelay & G. Robledo – New insights on *Bjerkandera* (Phanerochaetaceae, Polyporales) in the Neotropics with description of *Bjerkandera albocinerea* based on morphological and molecular evidence
- 246 C. Bitencourt, M.F. Fernandes, F.S. Espírito Santo & A. Rapini – Two new Critically Endangered species of *Ditassa* (Apocynaceae) from the threatened cangas of the Iron Quadrangle, Minas Gerais, Brazil
- 257 O. Lachenaud, T. Stévant & B. Sonké – Three new species of *Tricalysia* (Rubiaceae) from Atlantic Central Africa
- 267 P. De Block, F. Rakotonasolo, A. Vrijdaghs & S. Dessein – Two new species of *Phialiphora* (Spermacoceae, Rubiaceae) exemplify drought adaptations in western Madagascar
- 283 A.S. Fleischmann, N.H. Rakotoarivelo, A. Roccia, P.M. Gonella, L.R. Andriamiarisoa, A. Razanatsima & F. Rakotoarivony – A new and endemic species of *Drosera* (Droseraceae) from Madagascar

*continued inside*



**Meise  
Botanic Garden**



**Royal  
Botanical  
Society of  
Belgium**

ISSN 2032-3913 (print)

available online :  
[www.plecevo.eu](http://www.plecevo.eu)



## Contents

### REGULAR PAPERS

- 3 J.E. Ramírez-Albores, G. Bizama, R.O. Bustamante & E.I. Badano – Niche conservatism in a plant with long invasion history: the case of the Peruvian peppertree (*Schinus molle*, Anacardiaceae) in Mexico
- 12 D.A. Jiménez-López, R. Martínez-Camilo, N. Martínez-Meléndez & M. Kessler – Diversity of epiphyte ferns along an elevational gradient in El Triunfo Biosphere Reserve, southern Mexico
- 22 K.E. Abotsi, K. Kokou, G. Rouhan & V. Deblauwe – Vulnerability of pteridophytes to climate change and implications for their conservation in Togo (west Africa) [in French]
- 33 Y.U. Utaile, K. Helsen, S.G. Aydagnehum, B. Muys, S.C. Shibru & O. Honnay – Typology of the woody plant communities of the Ethiopian Nech Sar National Park and an assessment of vegetation-environment relations and human disturbance impacts
- 45 O. Copoș, C. Mardari, C.C. Bîrsan & C. Tănase – Lignicolous fungal assemblages and relationships with environment in broadleaved and mixed forests from the North-East Region of Romania
- 59 T. Mione & I.A. Diaz – Dracula's mistress: removal of blood-red floral nectar results in secretion of more nectar
- 67 M. Heuertz, H. Caron, C. Scotti-Saintagne, P. Pétronelli, J. Engel, N. Tysklind, S. Miloudi, F.A. Gaiotto, J. Chave, J.-F. Molino, D. Sabatier, J. Loureiro & K.B. Budde – The hyperdominant tropical tree *Eschweilera coriacea* (Parvifolia clade, Lecythidaceae) shows higher genetic heterogeneity than sympatric *Eschweilera* species in French Guiana
- 82 J.-P. Labouisse, P. Cubry, F. Austerlitz, R. Rivallan & H.A. Nguyen – New insights on spatial genetic structure and diversity of *Coffea canephora* (Rubiaceae) in Upper Guinea based on old herbaria
- 101 A. Bagheri, S. Abbasi, M. Mahmoodi, A. Akhavan Roofgar & F.R. Blattner – Genetic structure and conservation status of *Astragalus subrecognitus* (Fabaceae): a very rare and narrow endemic species
- 108 M. Cheek, B. Tchiengue & I. Baldwin – Notes on the plants of Bakossi, Cameroon, and the new *Cola etugei* and *Cola kodminensis* (Sterculiaceae s. str.)

*continued inside*



**Meise  
Botanic Garden**



**Royal  
Botanical  
Society of  
Belgium**

ISSN 2032-3913 (print)

available online :  
[www.ingentaconnect.com](http://www.ingentaconnect.com)

## Contents

<i>Drosera buubugujin</i> M.T.Mathieson (Droseraceae, <i>Drosera</i> section <i>Prolifera</i> C.T.White), a spectacular new species of sundew from the Cape York Peninsula bioregion, Queensland M.T. Mathieson & S.L. Thompson . . . . .	549–557
<i>Acacia lespedleyi</i> P.I.Forst. (Mimosaceae), a new and geographically restricted species from south-east Queensland P.I. Forster . . . . .	558–563
A taxonomic revision of <i>Camptacra</i> N.T.Burb. (Asteraceae: <i>Astereae</i> ) A.R. Bean . . . . .	564–575
A taxonomic revision of the genus <i>Lagenophora</i> Cass. (Asteraceae: <i>Astereae</i> ) in New Guinea J. Wang & A.R. Bean . . . . .	576–582
<i>Lobelia fenshamii</i> N.G.Walsh & Albr. and <i>L. fontana</i> Albr. & N.G.Walsh (Campanulaceae: <i>Lobelioideae</i> ), two new species endemic to artesian springs in central and south-western Queensland D.E. Albrecht, N.G. Walsh, R.W. Jobson & E.B. Knox . . . . .	583–593
<i>Denhamia megacarpa</i> J.J.Halford & Jessup and <i>D. peninsularis</i> J.J.Halford & Jessup (Celastraceae), two new species from Queensland J.J. Halford & L.W. Jessup . . . . .	594–603
A taxonomic reassessment of <i>Styphelia cuspidata</i> (R.Br.) Spreng. (Ericaceae) with the description of two new species <i>S. cognata</i> A.R.Bean and <i>S. lucens</i> A.R.Bean A.R. Bean . . . . .	604–611
<i>Bulbine fraseri</i> Kunth (Asphodelaceae) reinstated and distinguished from <i>B. bulbosa</i> (R.Br.) Haw. in eastern Australia P.F. Horsfall & D.E. Albrecht. . . . .	612–620
<i>Zieria abscondita</i> P.I.Forst. (Rutaceae), a new and geographically restricted species from south-east Queensland P.I. Forster . . . . .	621–627
Clarification of species boundaries within the <i>Ptilotus royceanus</i> Benl (Amaranthaceae) group T.A. Hammer, R.W. Davis & K.R. Thiele . . . . .	628–638
<i>Endiandra inopinata</i> B.Gray (Lauraceae), a new species from Queensland's Wet Tropics B. Gray . . . . .	639–644
Taxonomic notes on the <i>Melaleuca leucadendra</i> (L.) L. group (Myrtaceae) in Queensland A.R. Bean . . . . .	645–655